

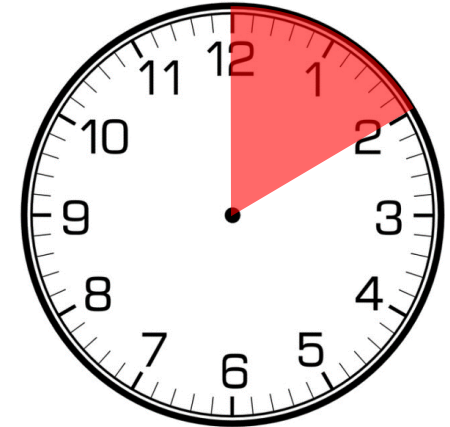
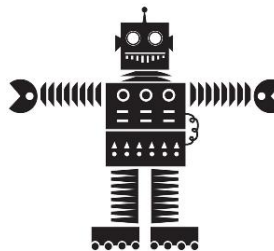
Button Batteries



Button cells are found in various household electric devices, such as remote controls, bathroom scales, some toys such as fidget spinners and numerous other products.

HOW TO AVOID ACCIDENTS

- Store button cells out of sight and reach of children.
- Try to opt for products that have a securely fastened battery compartment, especially if you have young children.
- Make sure that you securely refasten the battery compartment every time you change the button cell batteries.
- **DO NOT** keep your waste button cells at home. Take them to a collection point for recycling.
- **DO NOT** store button cells together with medication / tablets or coins.



If a child swallows a battery, don't delay! Button cells (especially lithium based) can cause severe tissue burns that can be, in worst case, fatal in as little as **2 hours**.

IF YOU THINK YOUR CHILD HAS SWALLOWED A BATTERY

- Seek immediate medical attention at a hospital / emergency ward.
- Try to take the appliance containing the battery or the original product package with you to help the doctor.
- **DO NOT** induce vomiting.
- **DO NOT** let your child eat or drink until an x-ray can determine whether a battery is present.